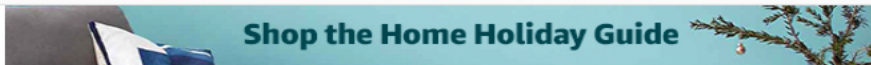


How to put a plan together:

Terri's old fashioned tried and true yellow trace method!



Home & Kitchen > Arts, Crafts & Sewing



Click to open expanded view

Borden & Riley #35C Sun-Glo Thumbnail Sketch Paper, 8 lb, 12 Inches x 20 Yards Per Roll, Canary Yellow, 1 Roll Each (35CR122000) Brand: Borden & Riley 5 ratings

Price: CDN\$ 17.37 + CDN\$ 5.36 Shipping. An Import Fees Deposit may apply at checkout. prime

New (2) from CDN\$ 17.37 + CDN\$ 5.36 Shipping

- 8 lb. paper
• Transparent with 4 sheet overlays
• Ideal for engineers and architects
• Designed to be used with pens, pencils or markers
• Fortified to withstand considerable handling

CDN\$ 17.37 + CDN\$ 5.36 Shipping. An Import Fees Deposit may apply at checkout. prime Arrives: Dec 11 - 28 Only 10 left in stock. Quantity: 1 Add to Cart Buy Now Secure transaction Sold by Noteworthy Goods and Fulfilled by Amazon from outside Canada. Customs & Duties may apply. Importers of commercial goods should review the shipping & delivery policy. Add gift options Select delivery location Add to Wish List

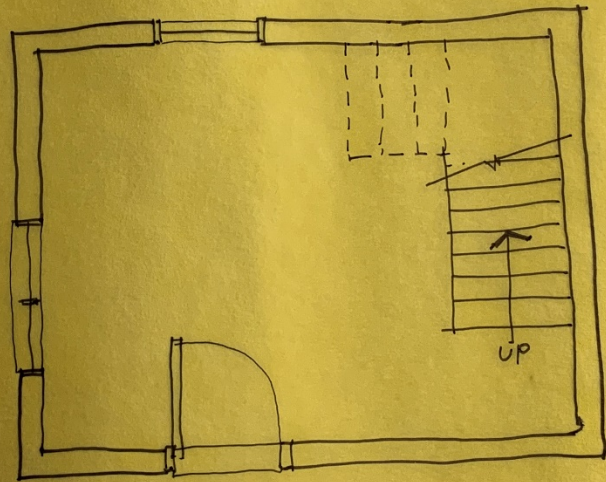
Frequently bought together



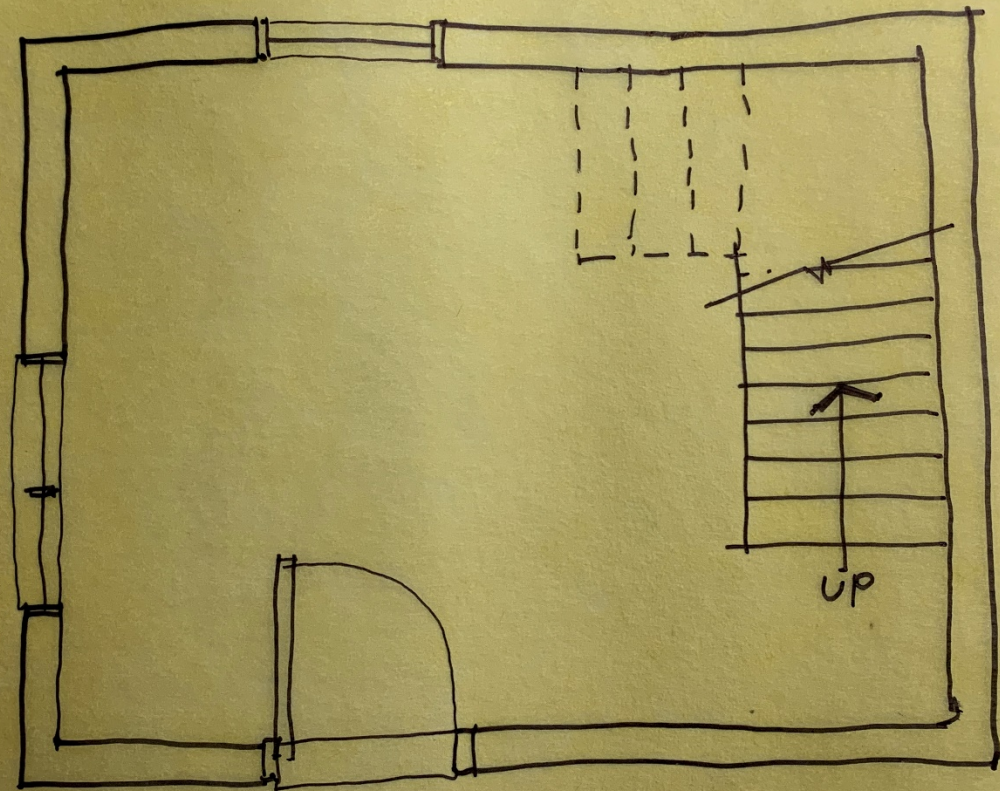
Total price: CDN\$150.80

Add all three to Cart

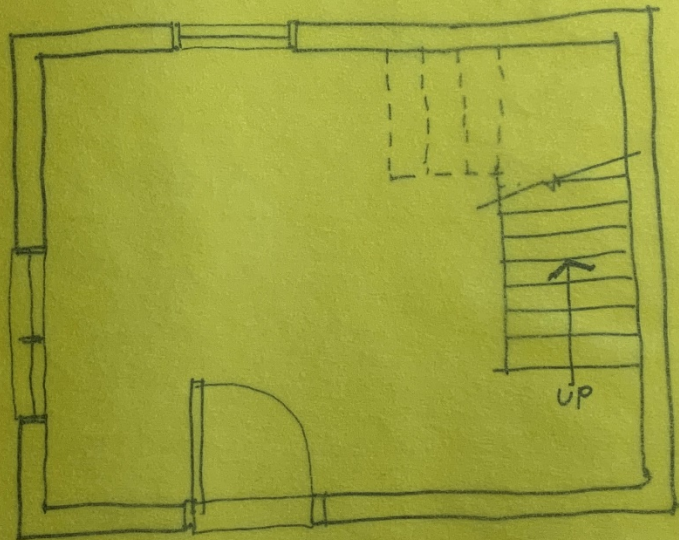
These items are shipped from and sold by different sellers. Show details



Ground floor plan....

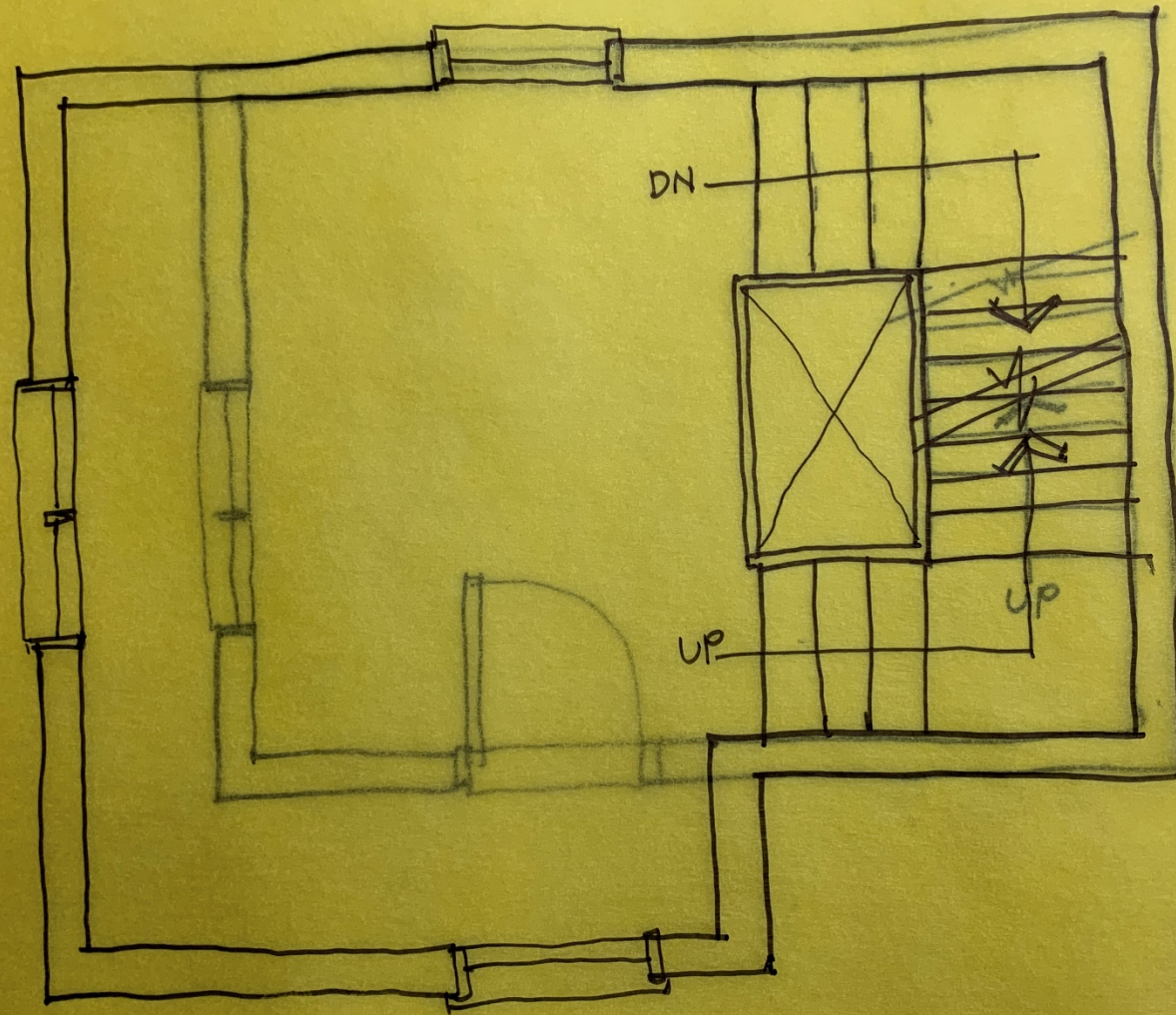


Ground floor plan

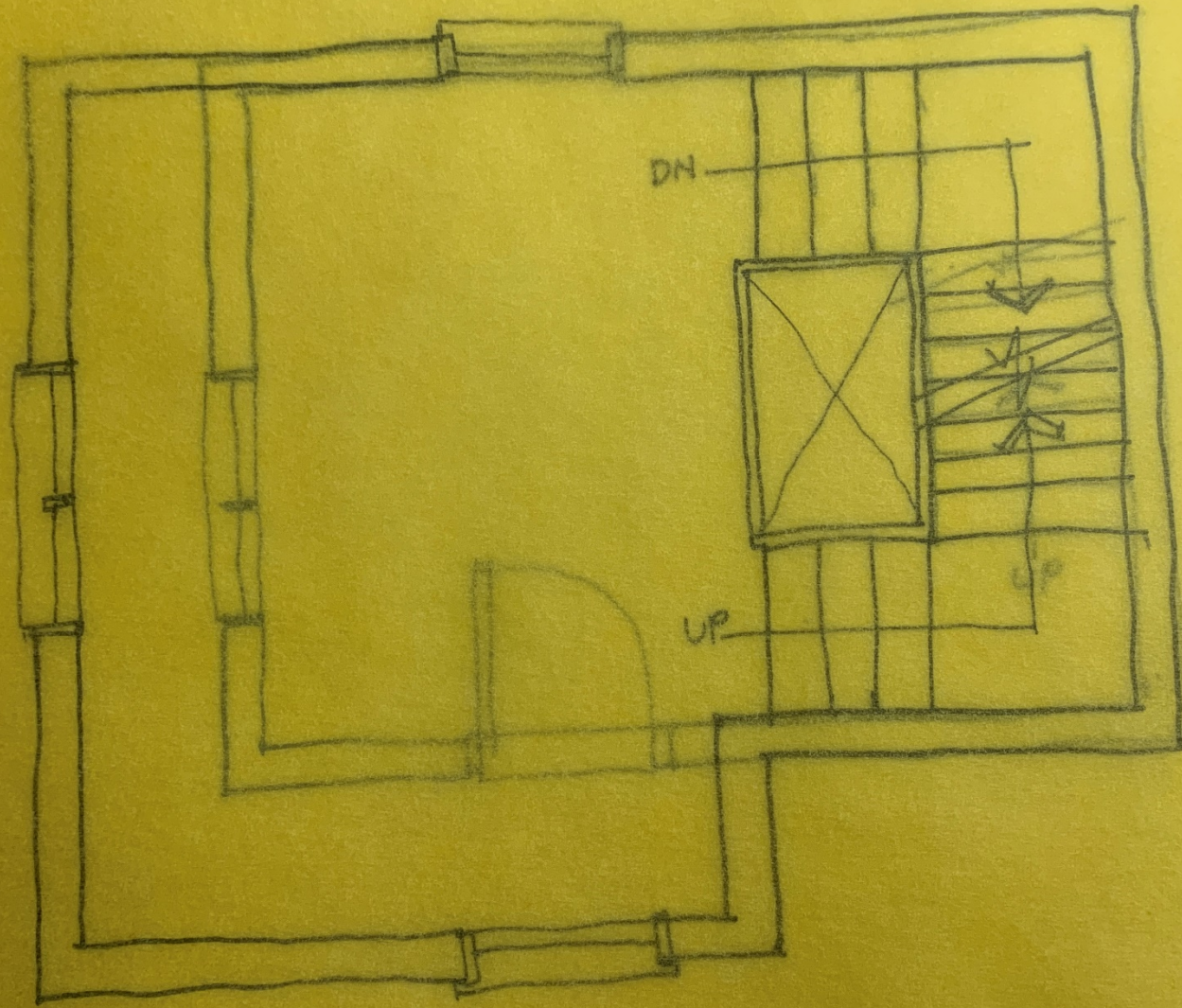


Overlay another sheet of trace

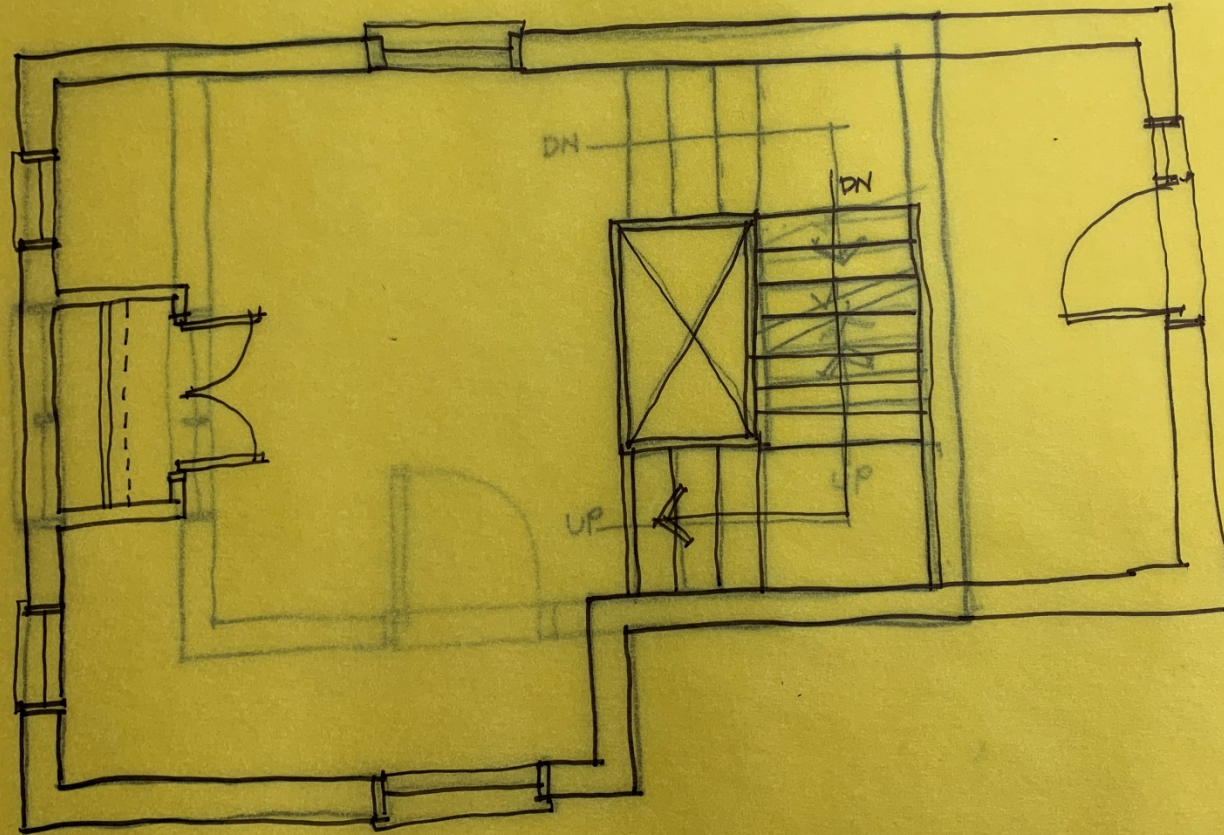
Draw the second floor plan ON TOP of the ground...
Line everything up!



Stretch over another layer of trace....

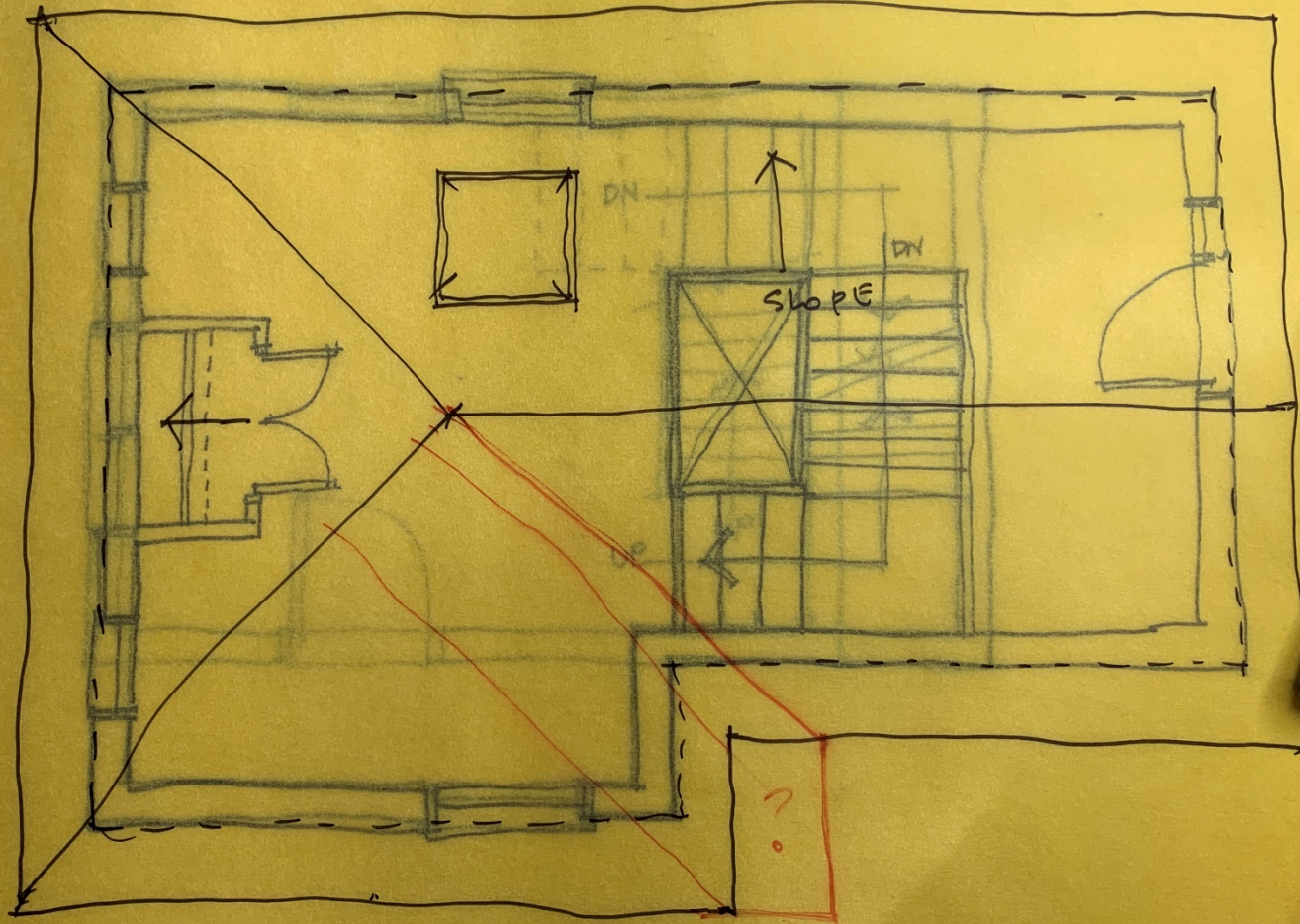


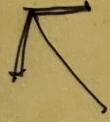
Draw the third floor plan...
Everything lines up!



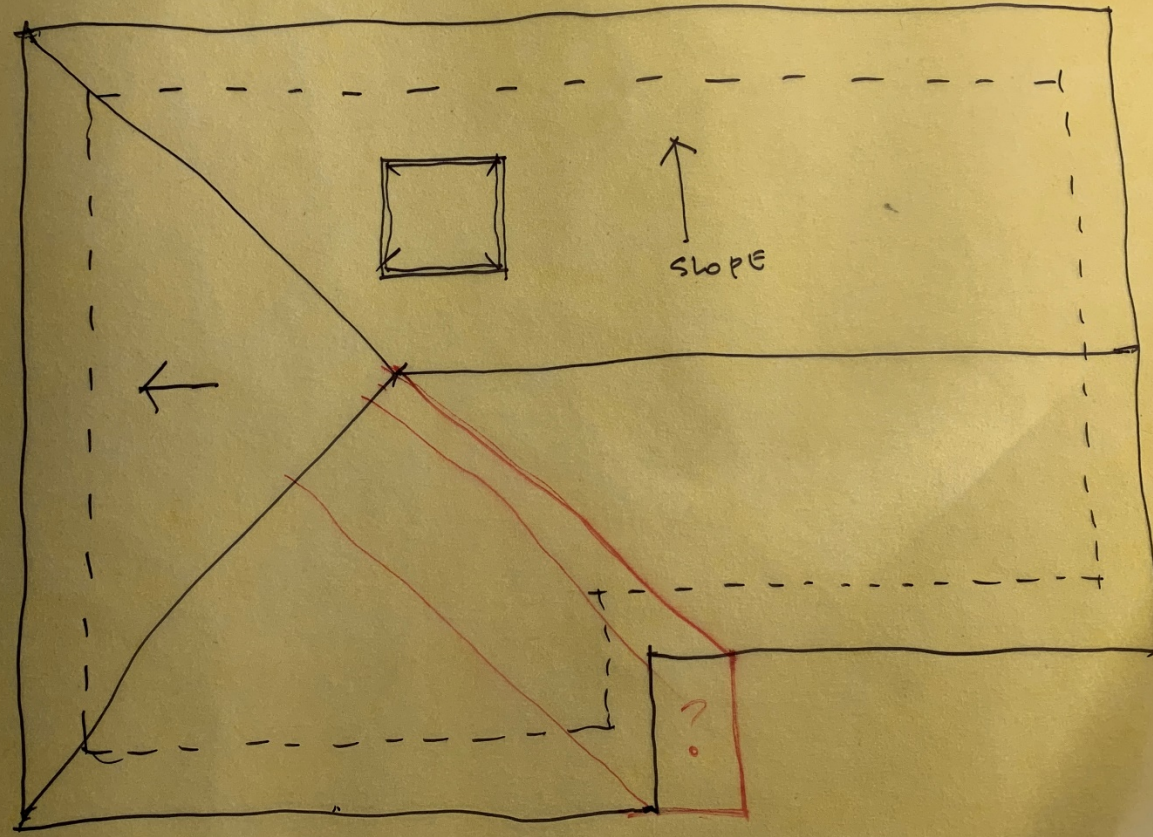
Last layer is the roof plan...

Not working out so well... will figure that out later. Pitched roofs are hard.





Slopes are not working properly.
Will go back after.

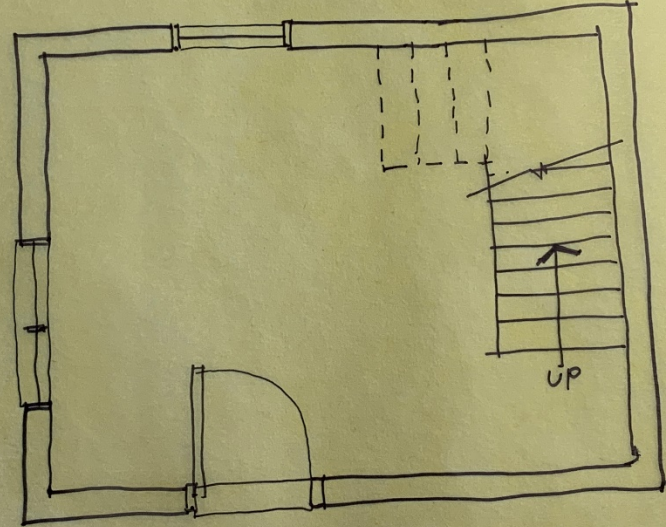


ROOF PLAN





Back to the ground floor plan,
With title and NORTH arrow

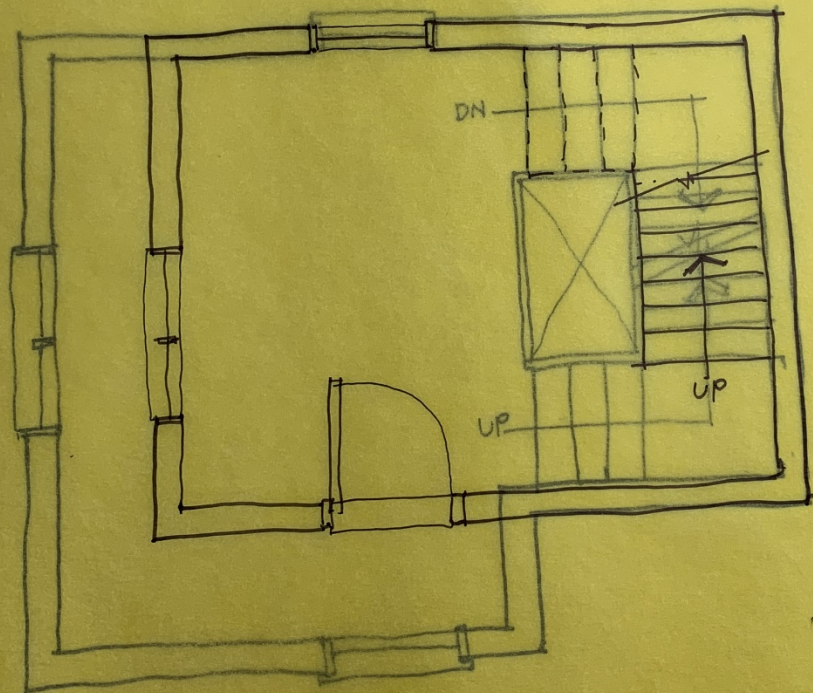


GROUND FLOOR PLAN



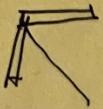


Slip the second floor plan under
So that we can trace in the overhangs
It makes with the first

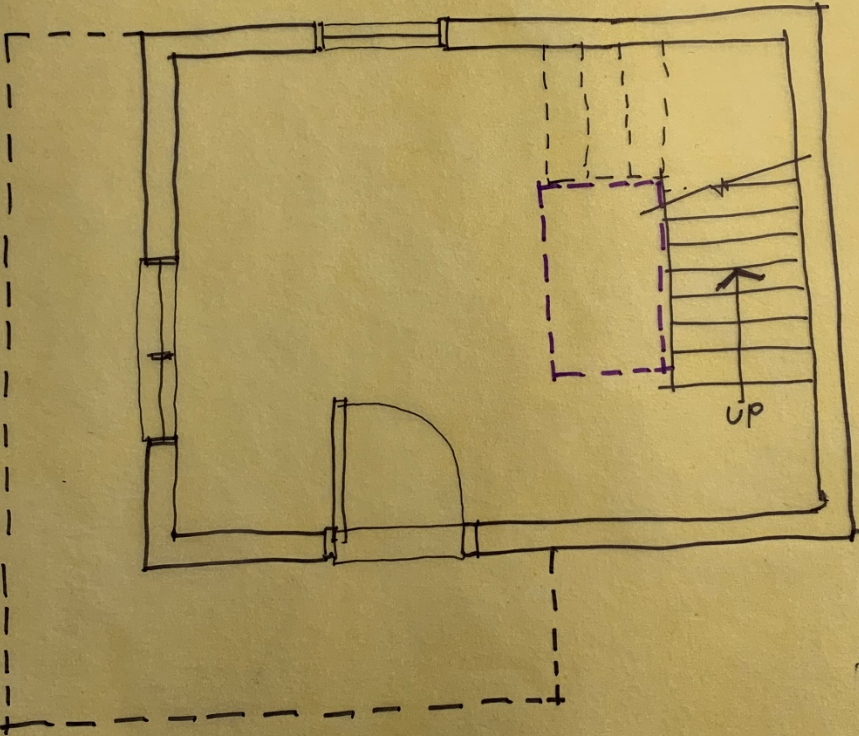


GROUND FLOOR PLAN I





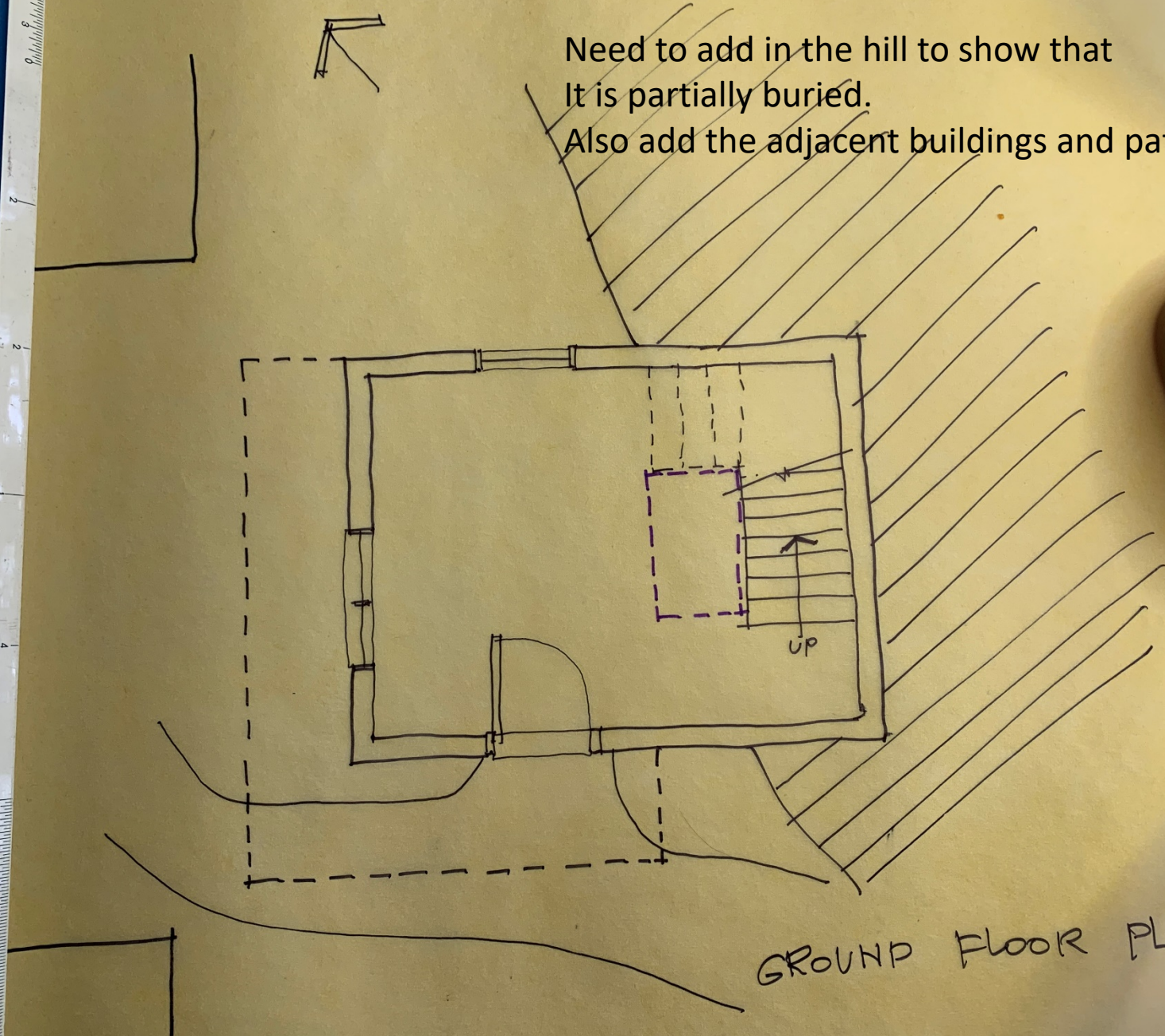
Remove the second floor plan and see the Dotted lines made to show how it overhangs.



GROUND FLOOR PLAN

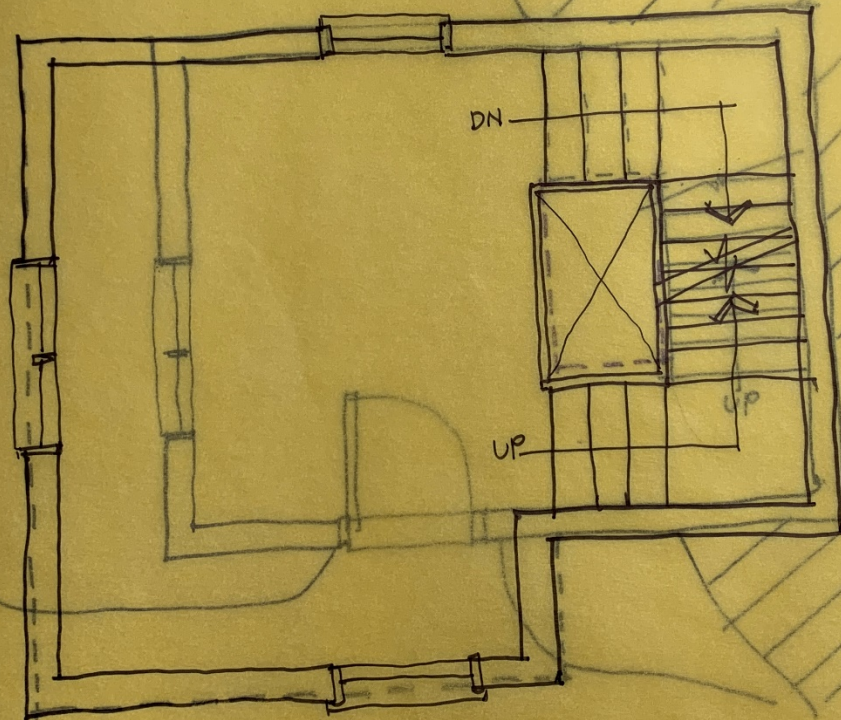


Need to add in the hill to show that
It is partially buried.
Also add the adjacent buildings and paths



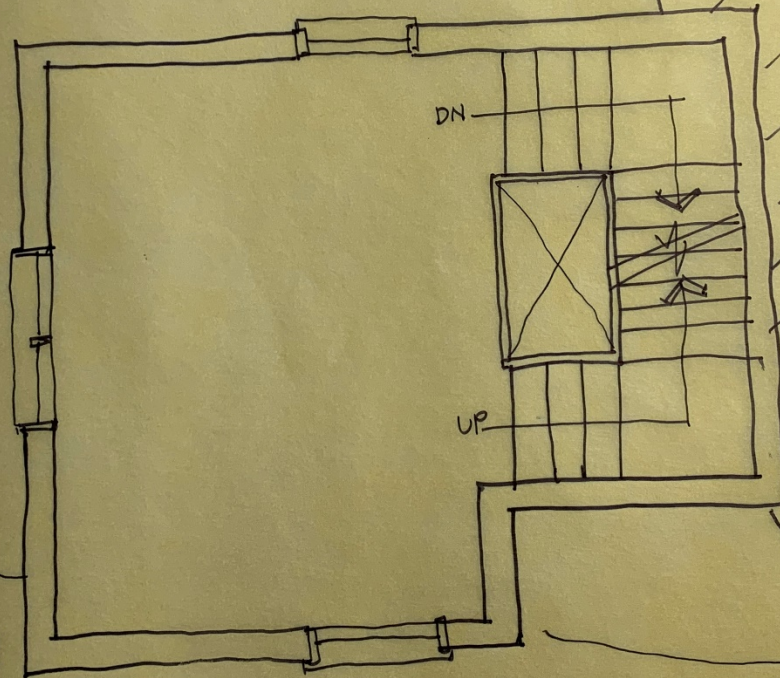
GROUND FLOOR PLAN

Slip ground under second to transfer the landscape



GROUND FLOOR PLAN
SECOND FLOOR PLAN

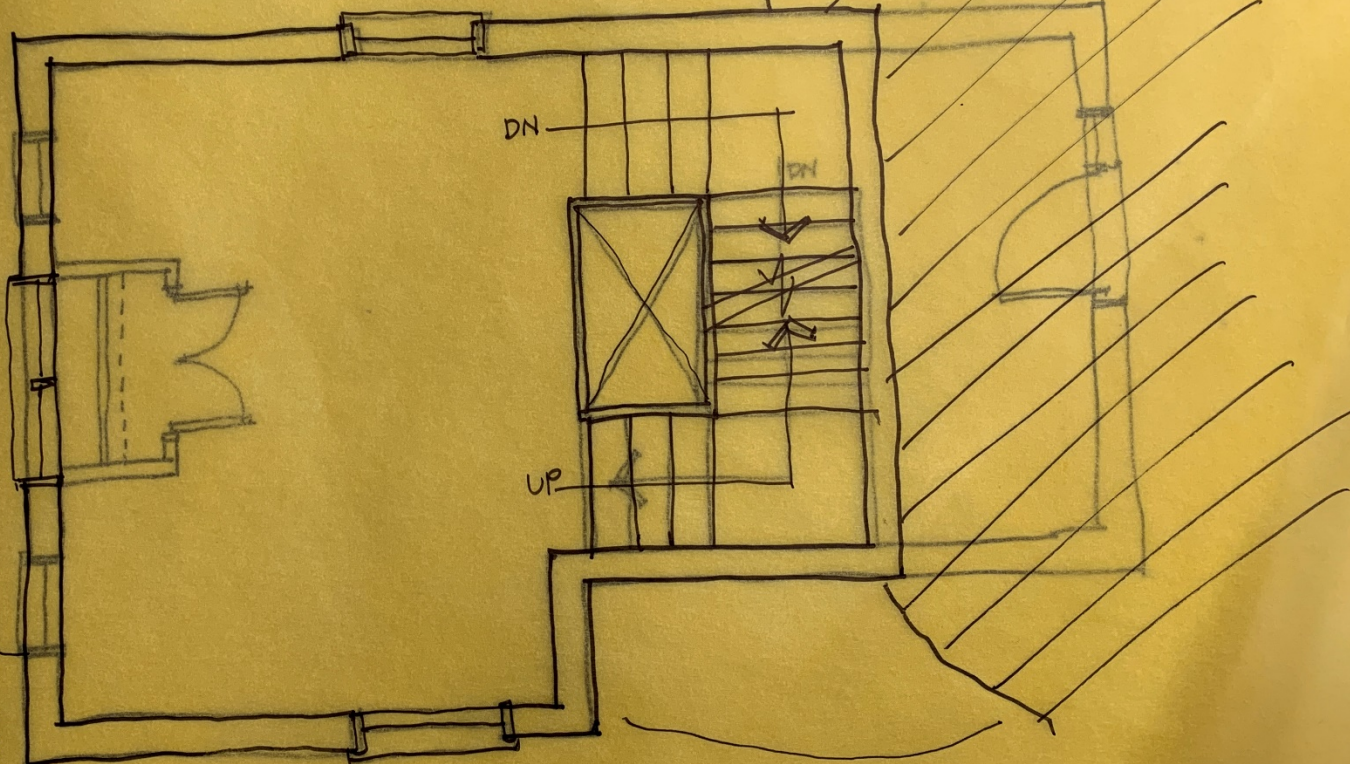
Second floor now shows its site
But needs third floor info transferred



SECOND FLOOR PLAN

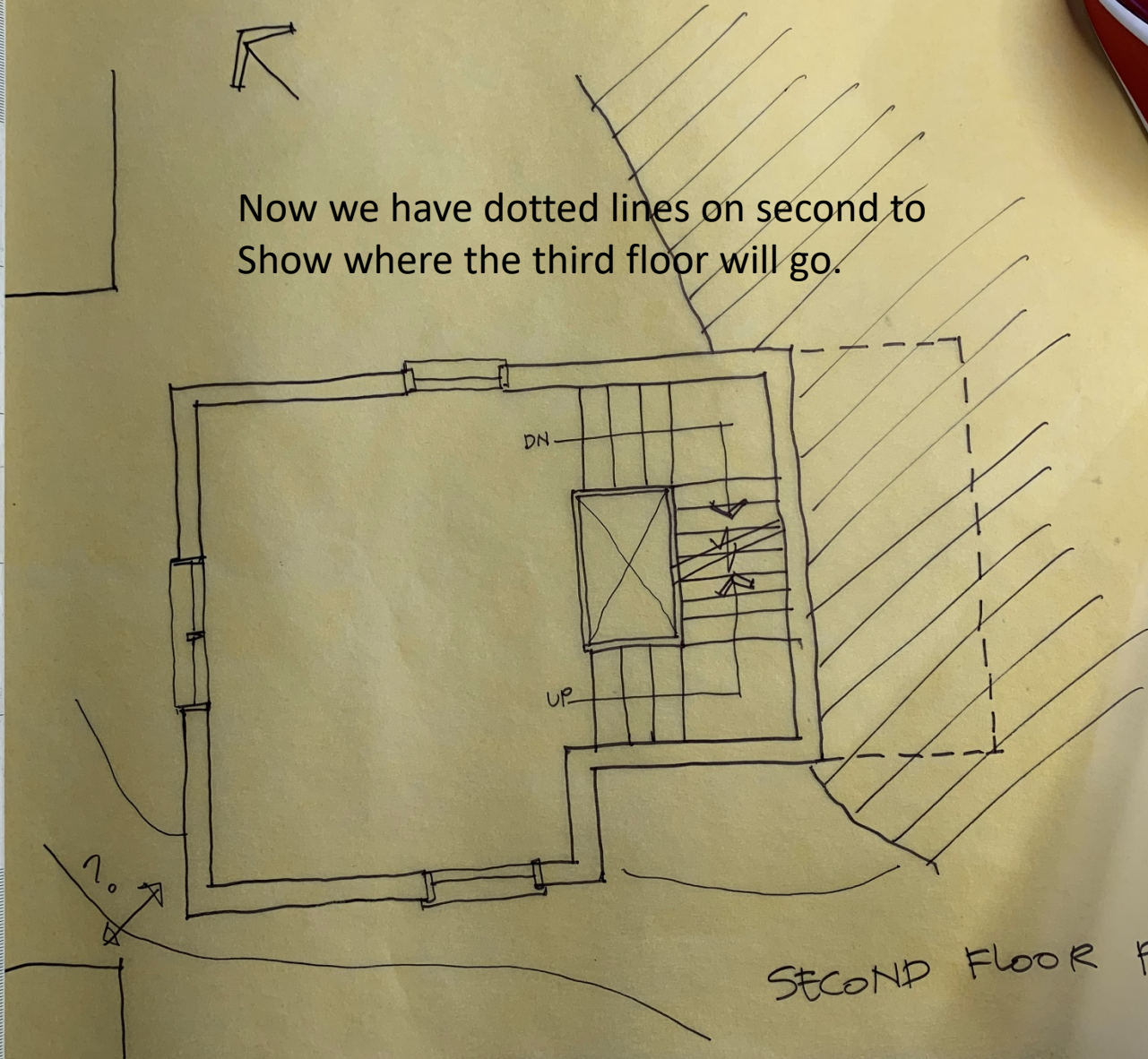


Slip third under second



THIRD FLOOR PLAN
SECOND FLOOR PLAN

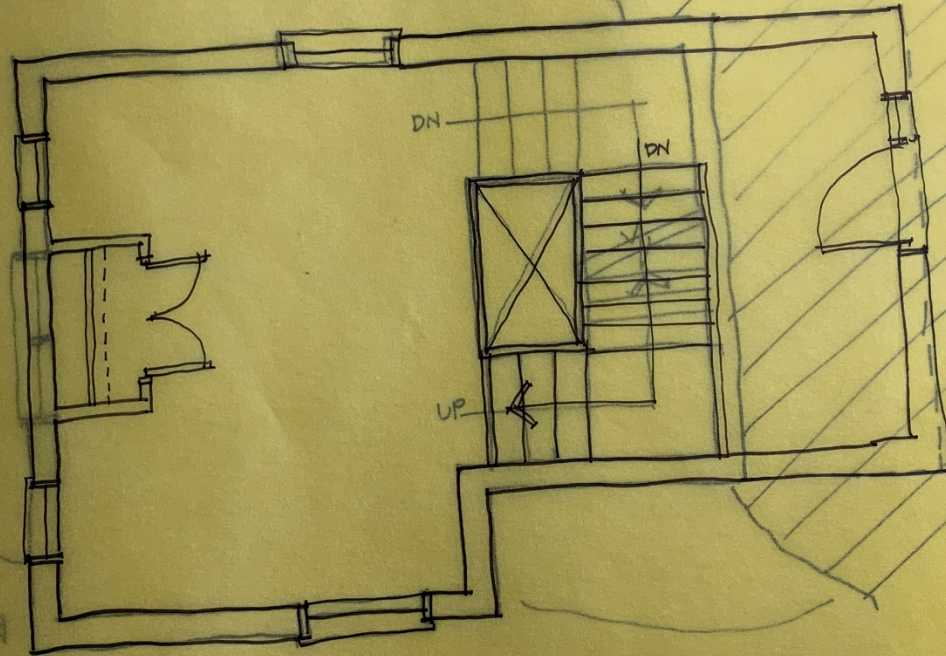
Now we have dotted lines on second to
Show where the third floor will go.



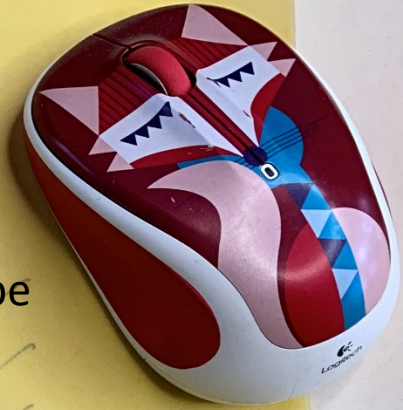
SECOND FLOOR PLAN

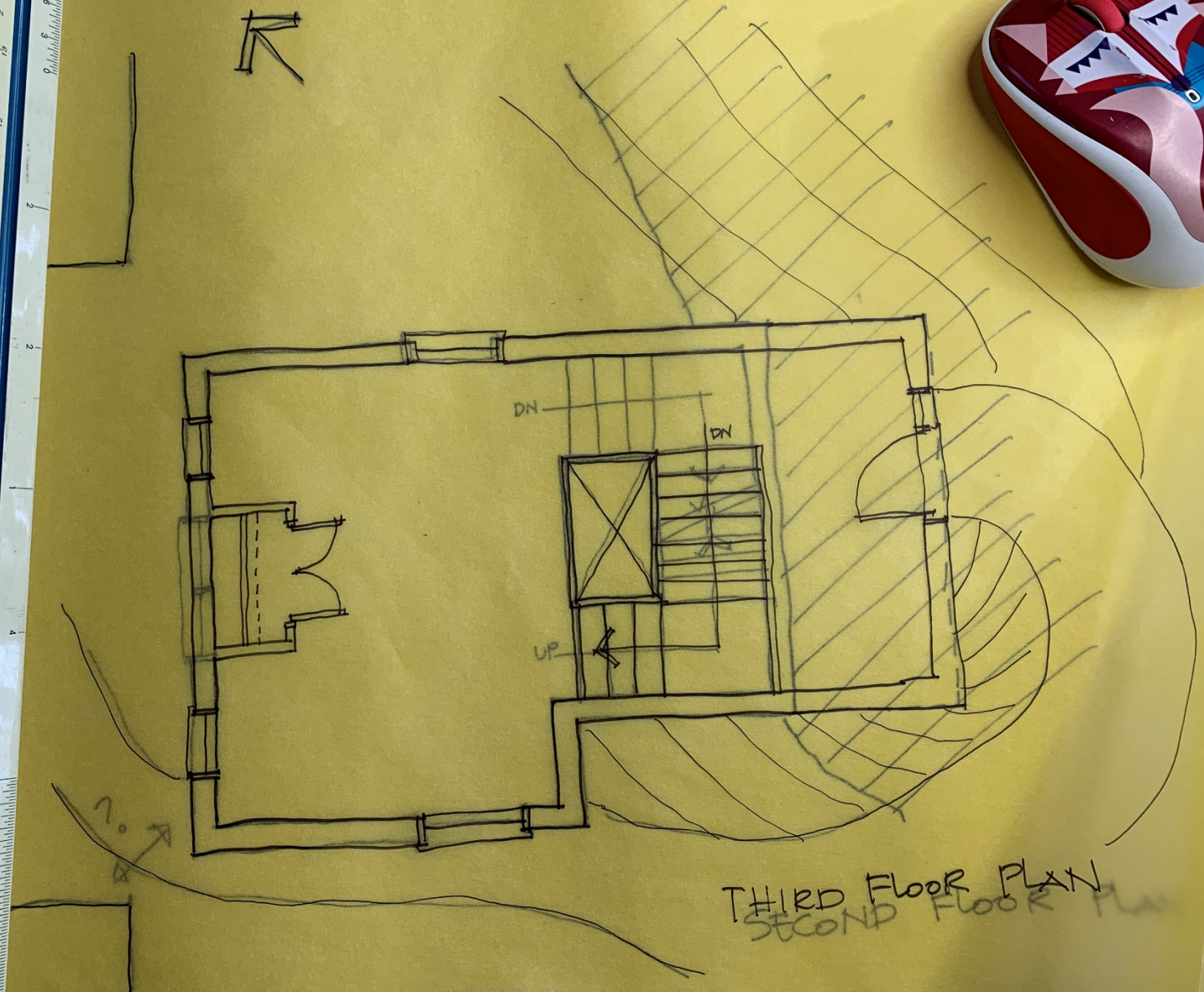


Now put the third floor on top and add the landscape



THIRD FLOOR PLAN
SECOND FLOOR PLAN

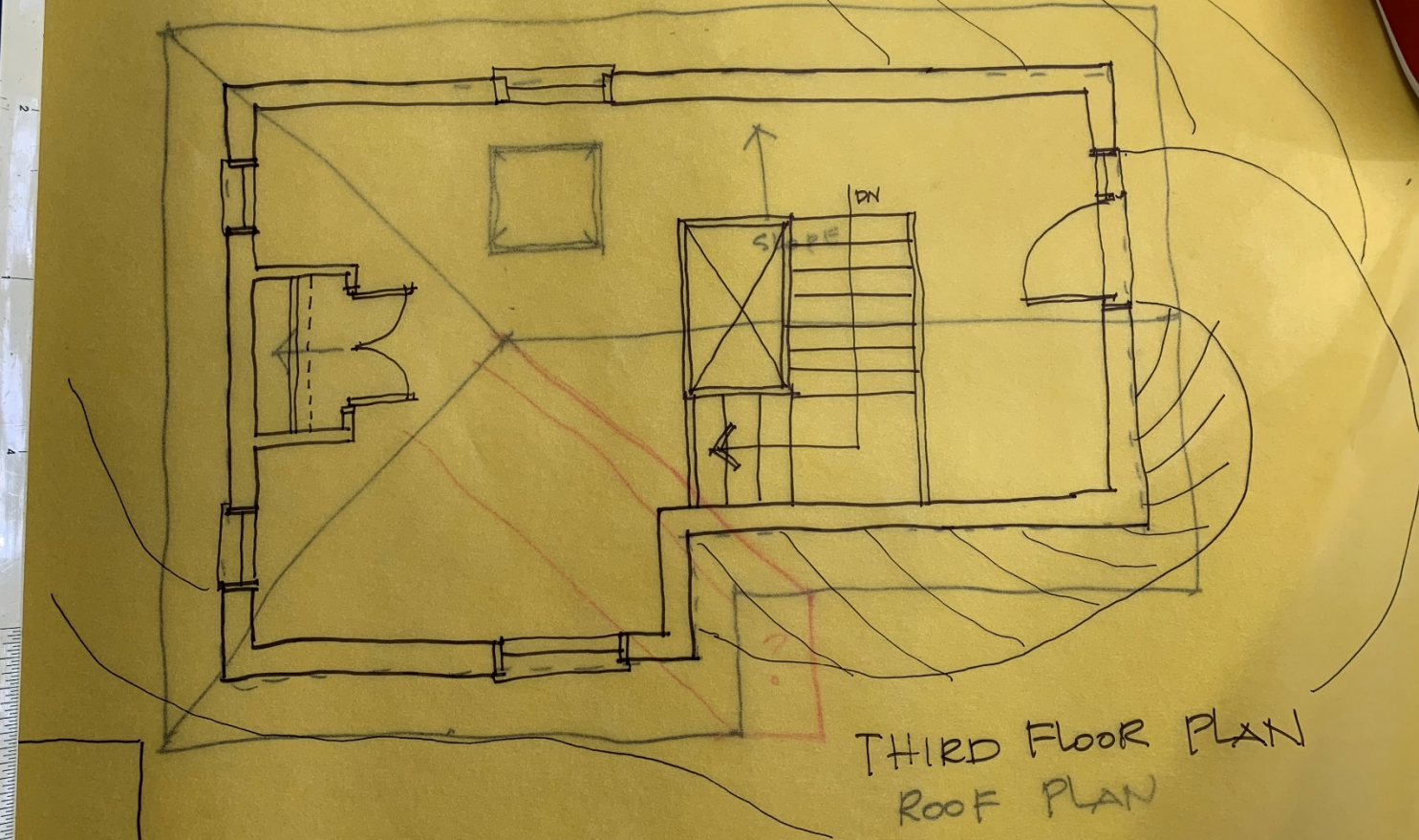




THIRD FLOOR PLAN
SECOND FLOOR PLAN

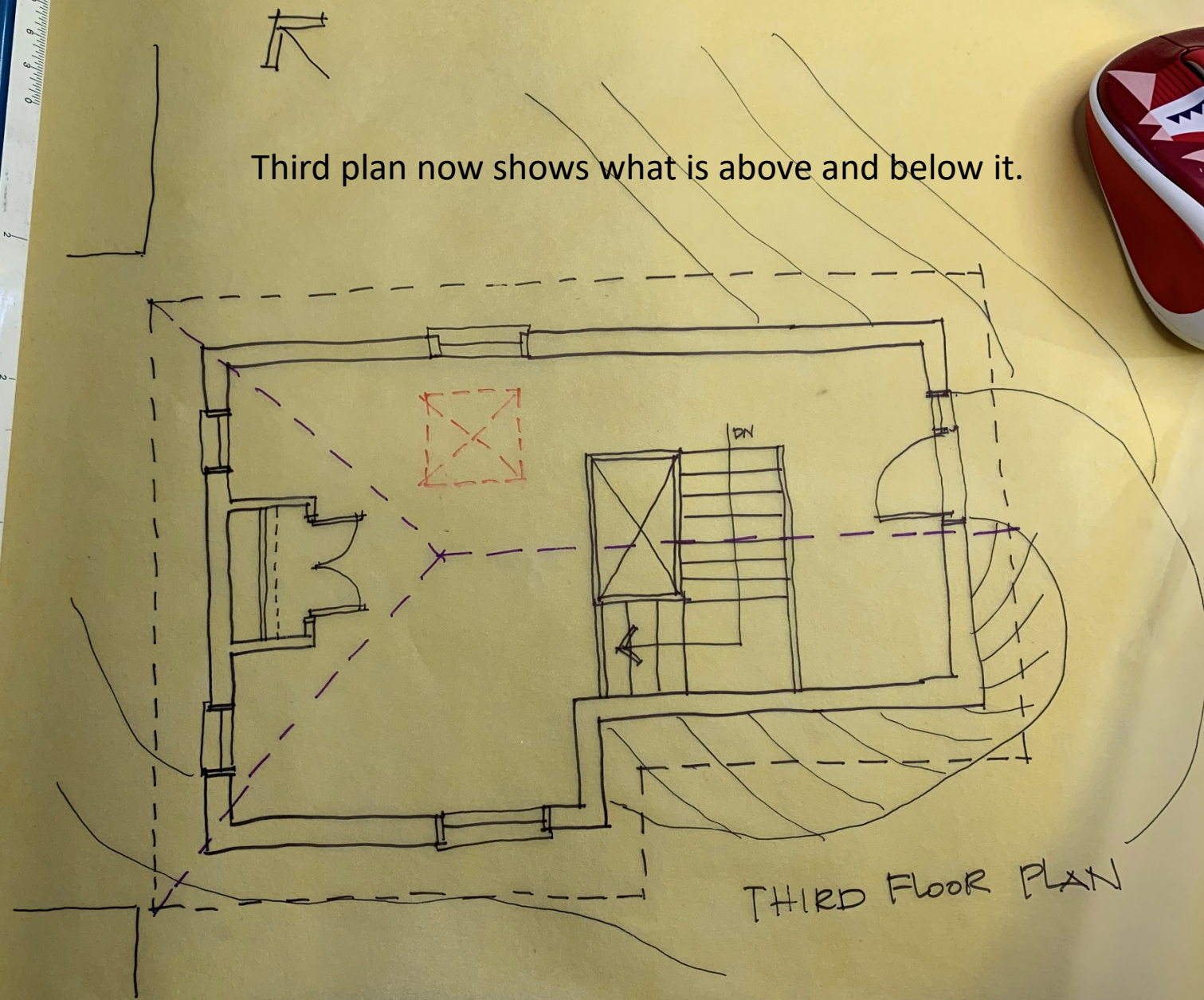


Slip roof under third to dot in the roof overhangs
And ridge lines and skylight.



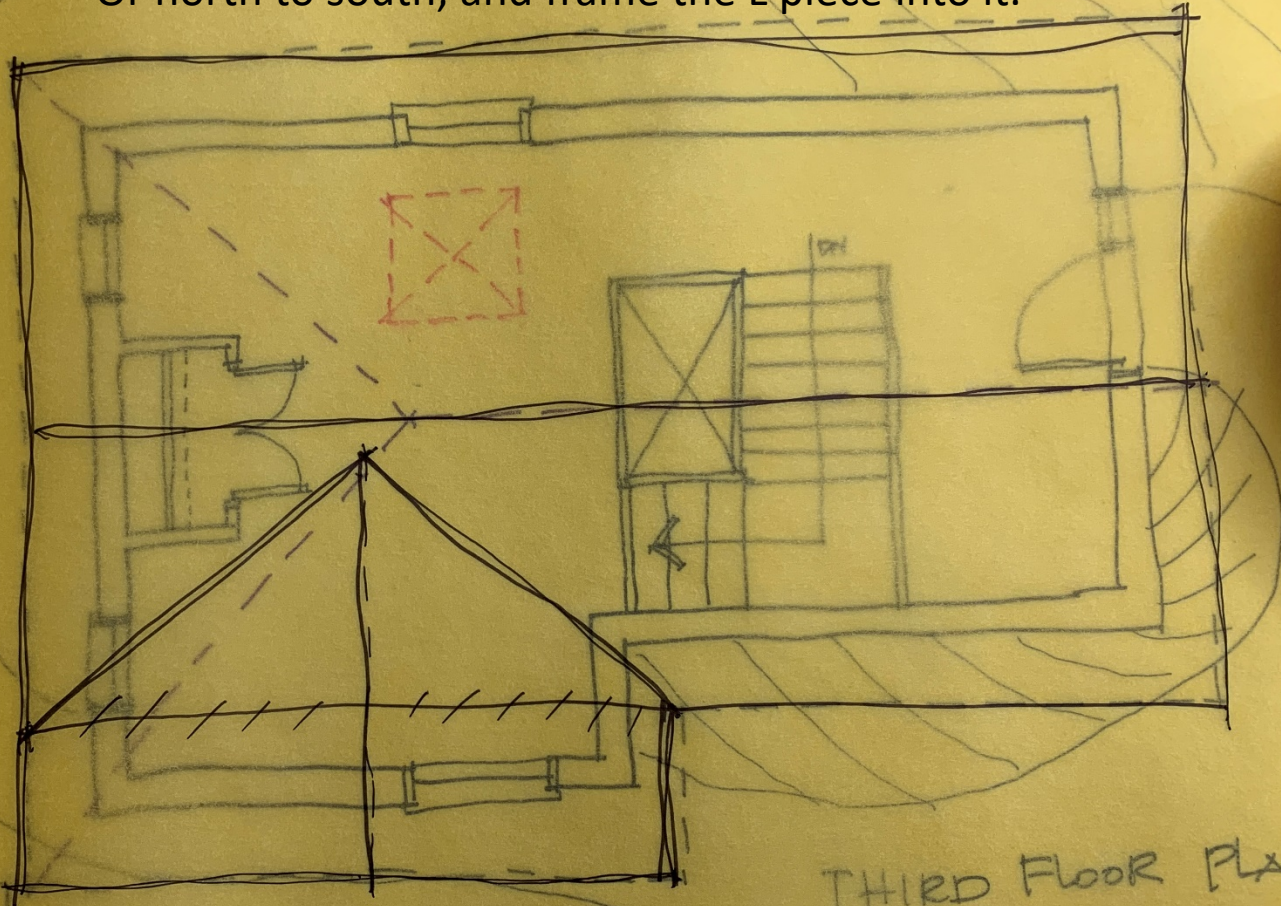
THIRD FLOOR PLAN
ROOF PLAN

Third plan now shows what is above and below it.

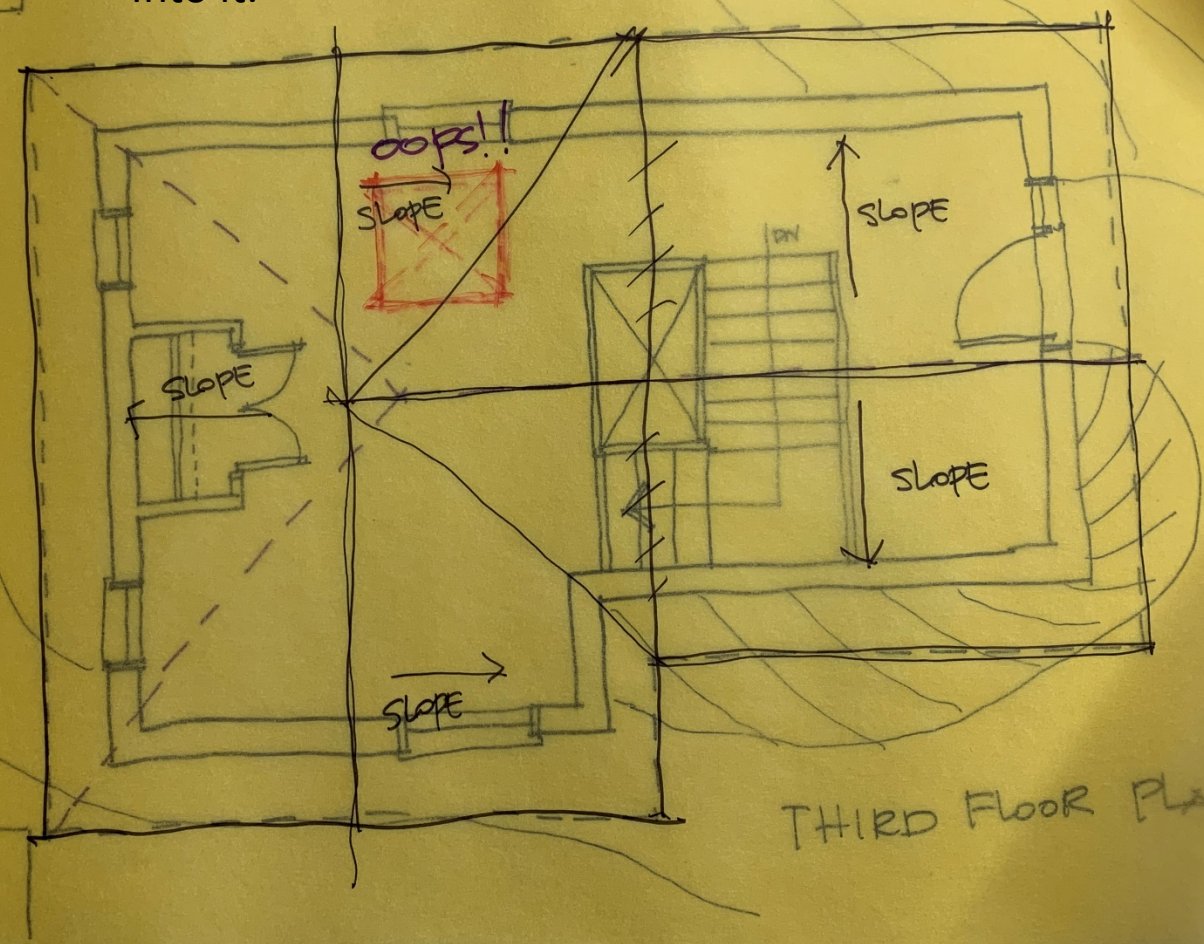


THIRD FLOOR PLAN

Let's mess with the roof! Think about how it is constructed.
They will either put a ridge roof continuously east to west,
Or north to south, and frame the L piece into it.

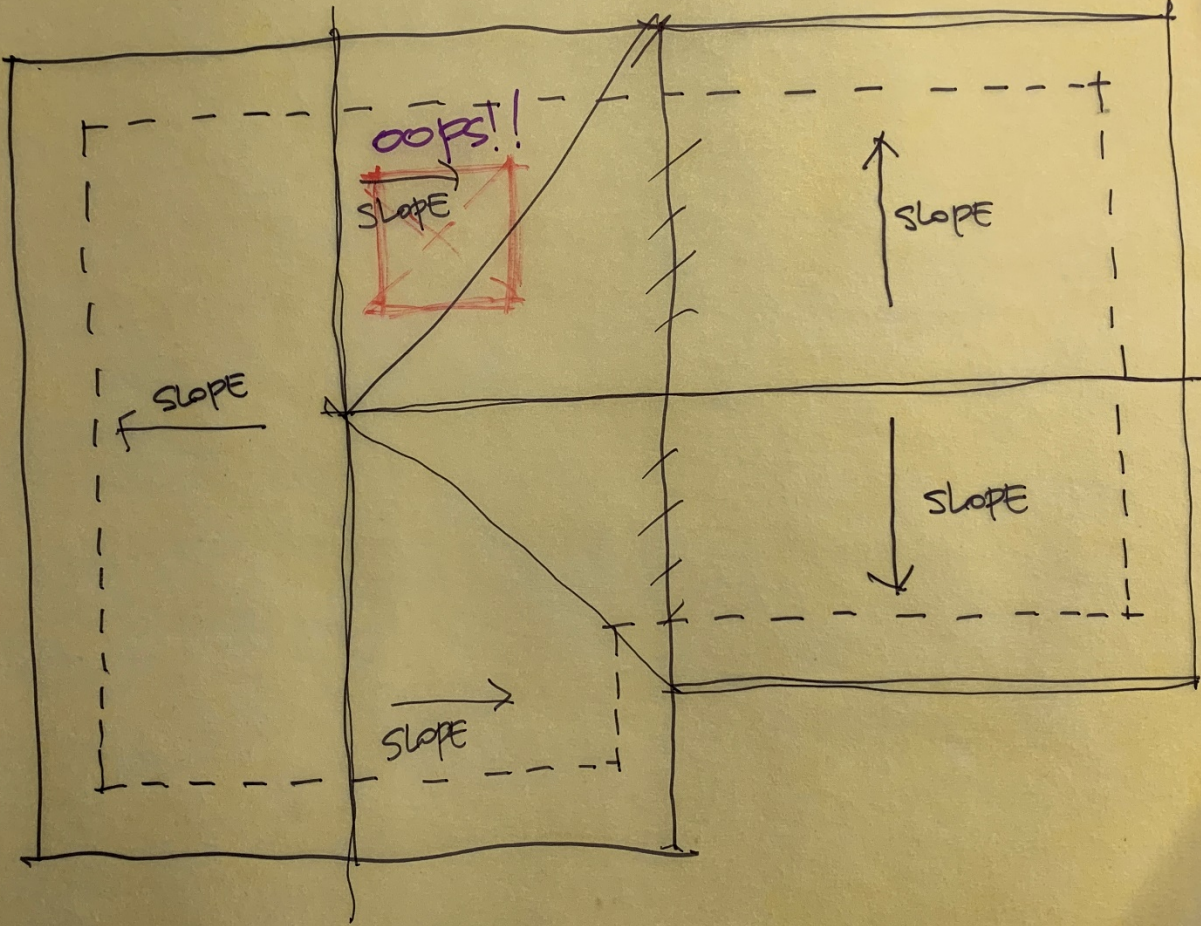


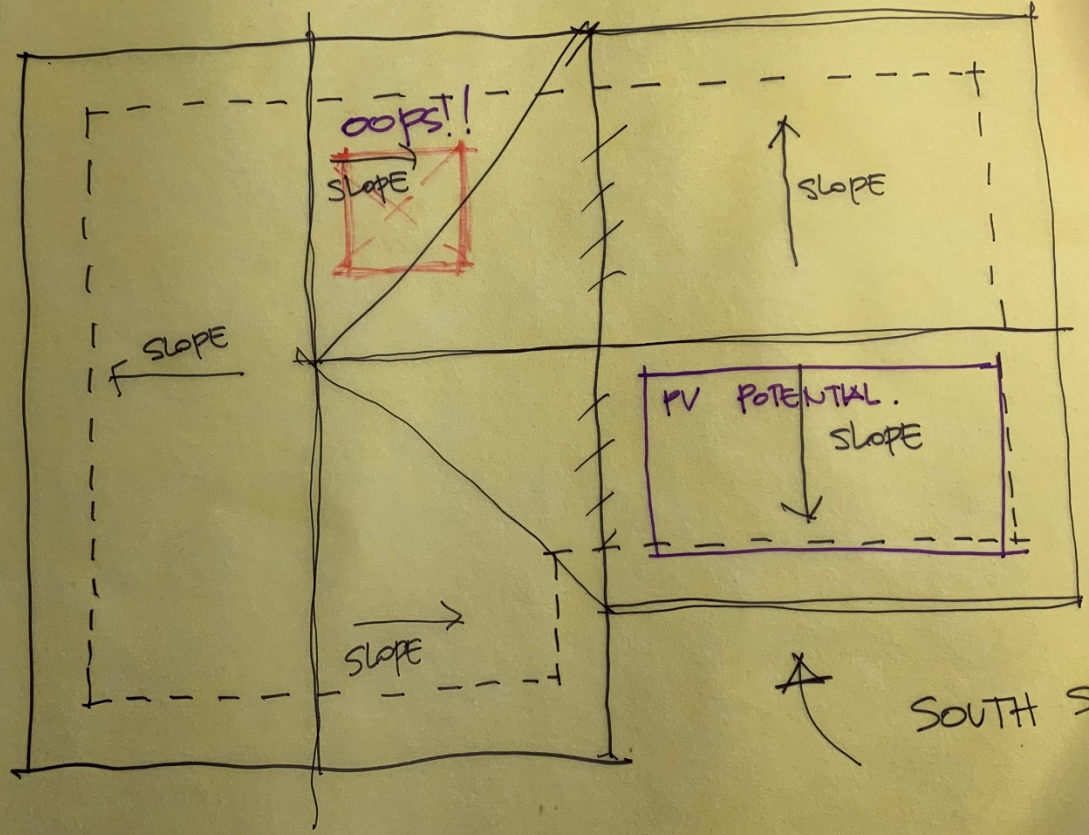
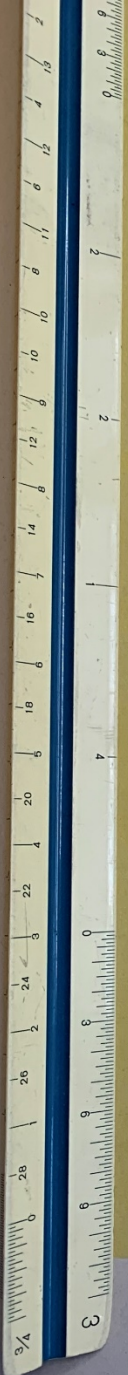
I think I prefer the look of having the north south
Part in place first with the east west portion framing
Into it.



THIRD FLOOR PLAN

But the skylight I had roughed in is in a bad spot so
Will have to move it.

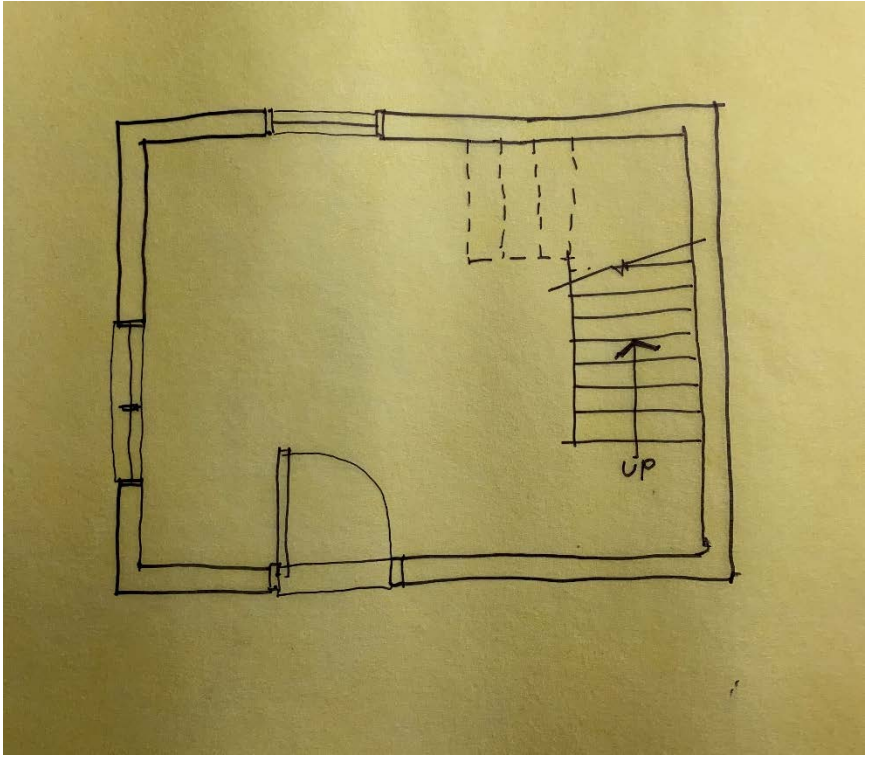




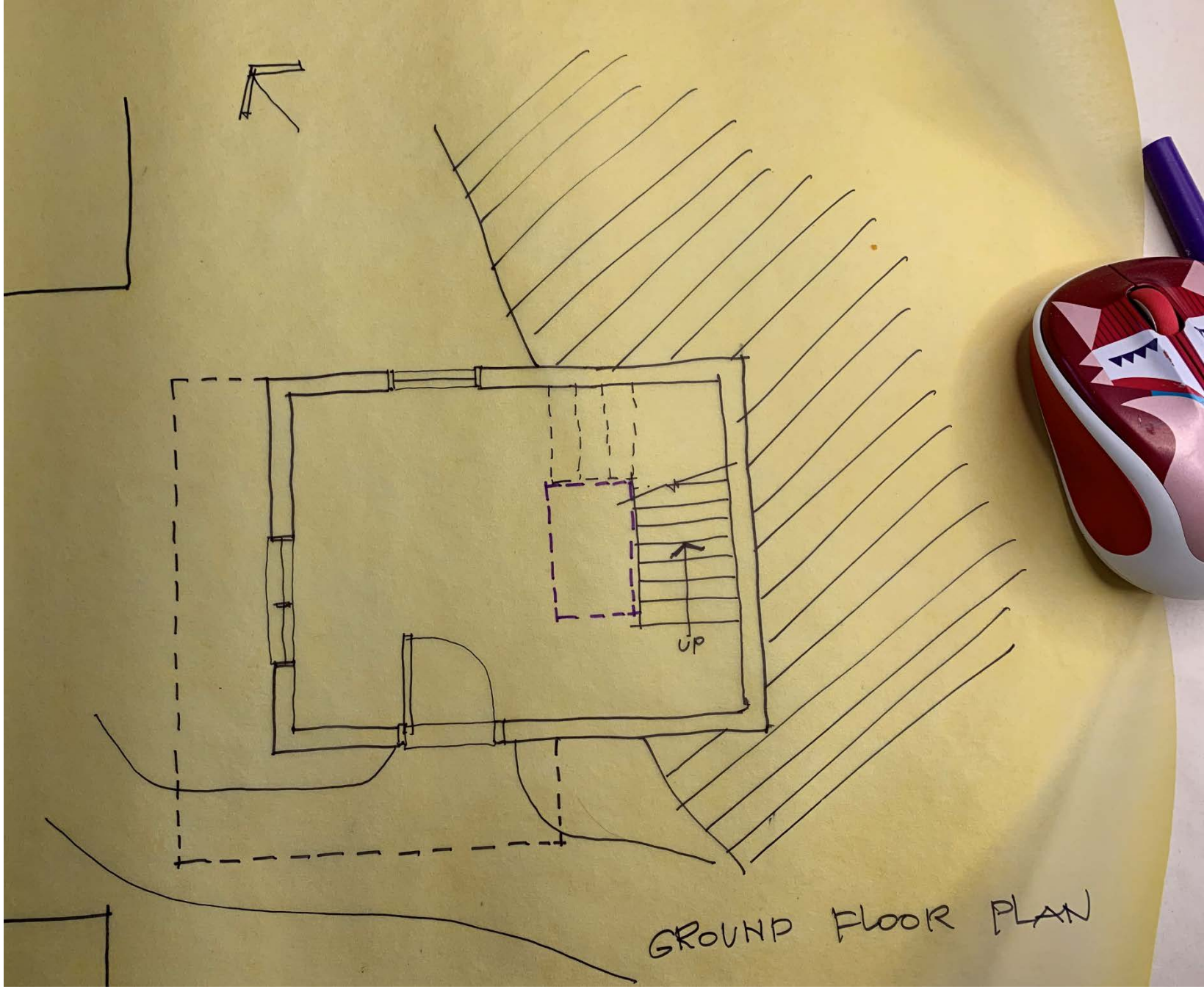
SOUTH SLOPE



Same essential floor plan.
Reads entirely differently.



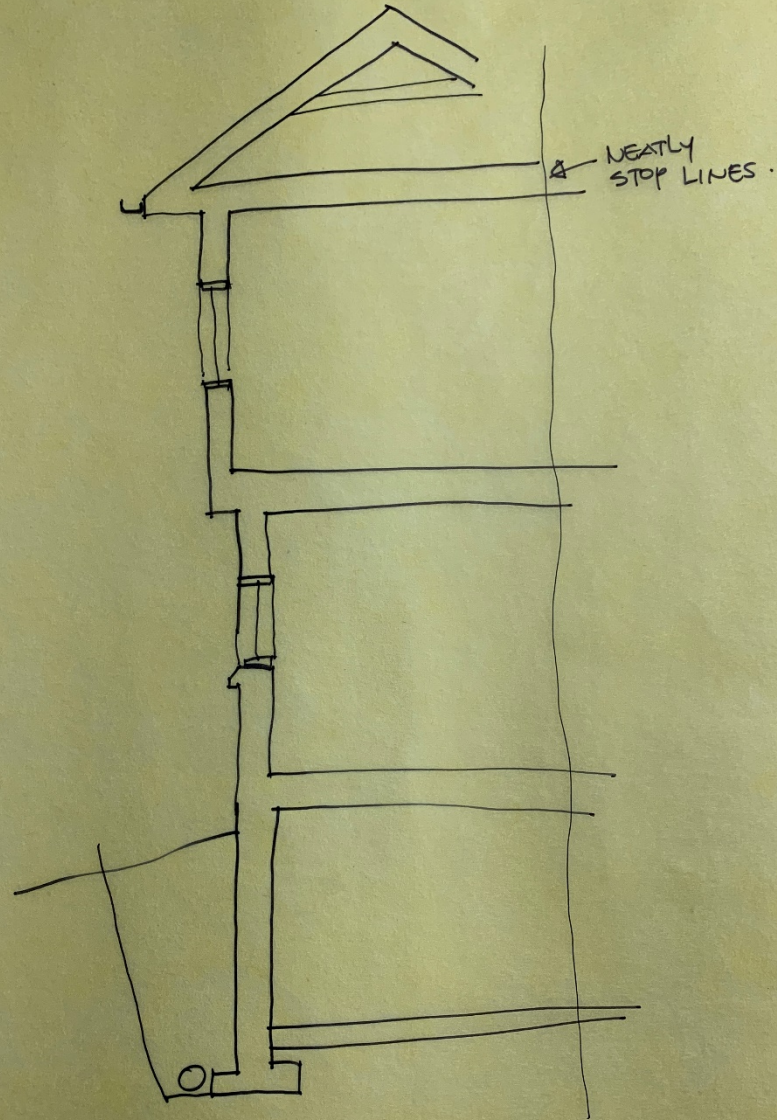
Entire drawing set took
me an hour.



Final Wall Section Assignment

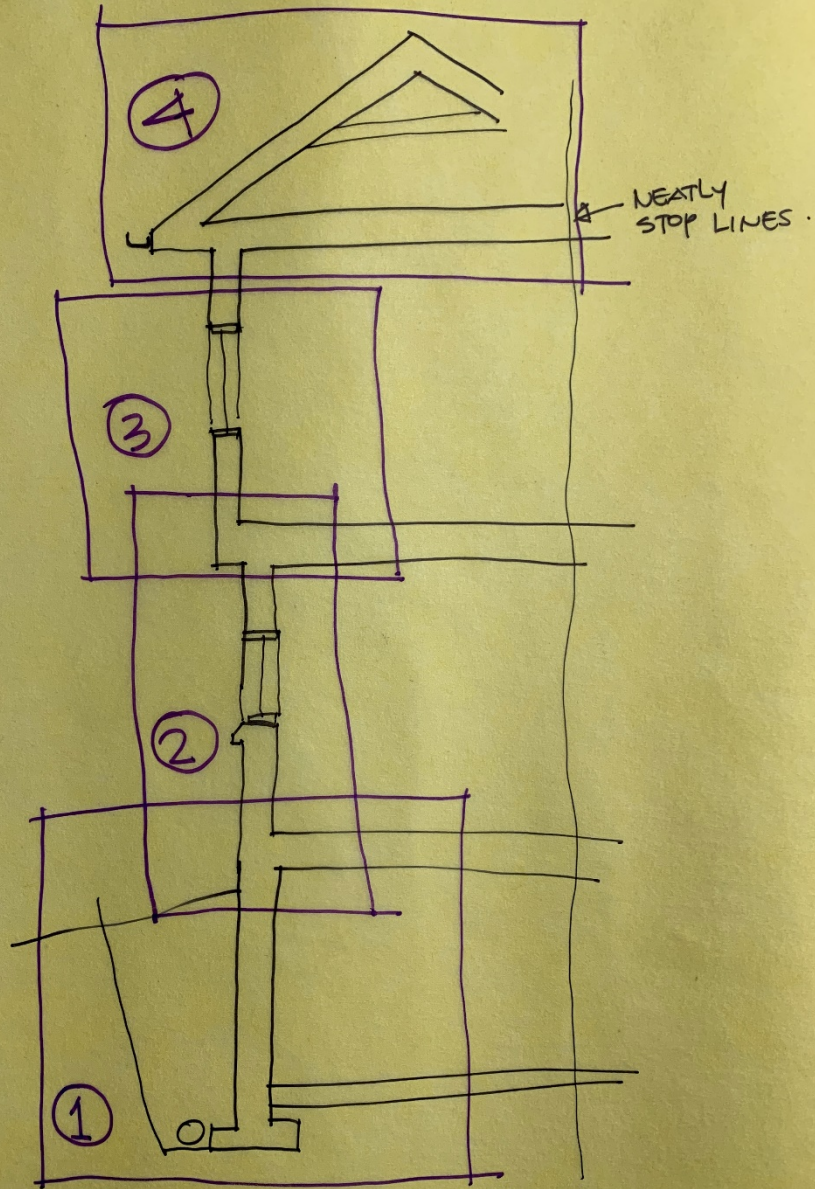
Draw the section from the base of the foundation to the peak of the roof.

Submit a photo of the entire drawing for my reference.



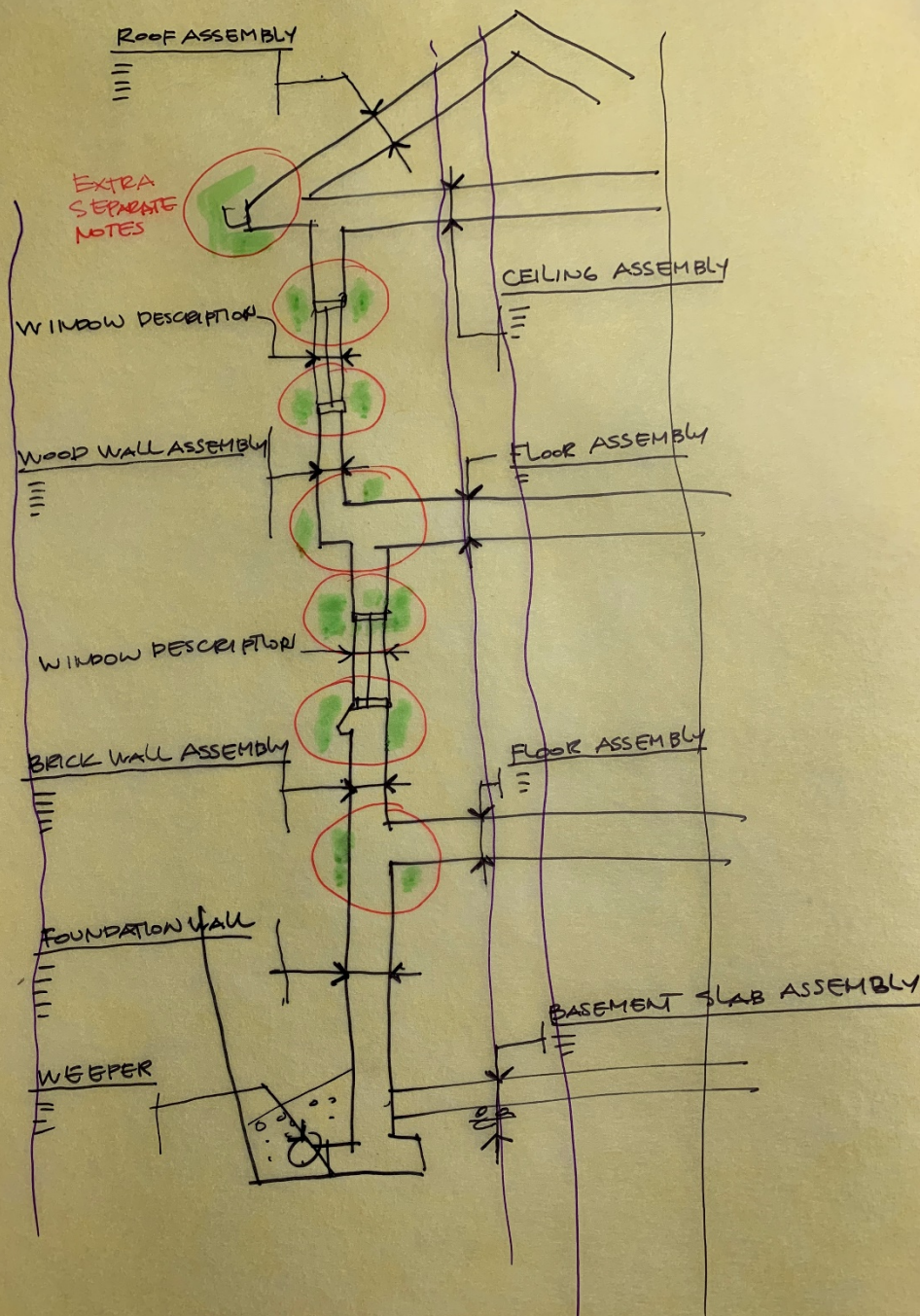
Take 4 closer photos of each of the sections as shown and upload in the order 1, 2, 3, 4 AFTER the overall photo.

Should be a bit of overlap between the edges of the images.



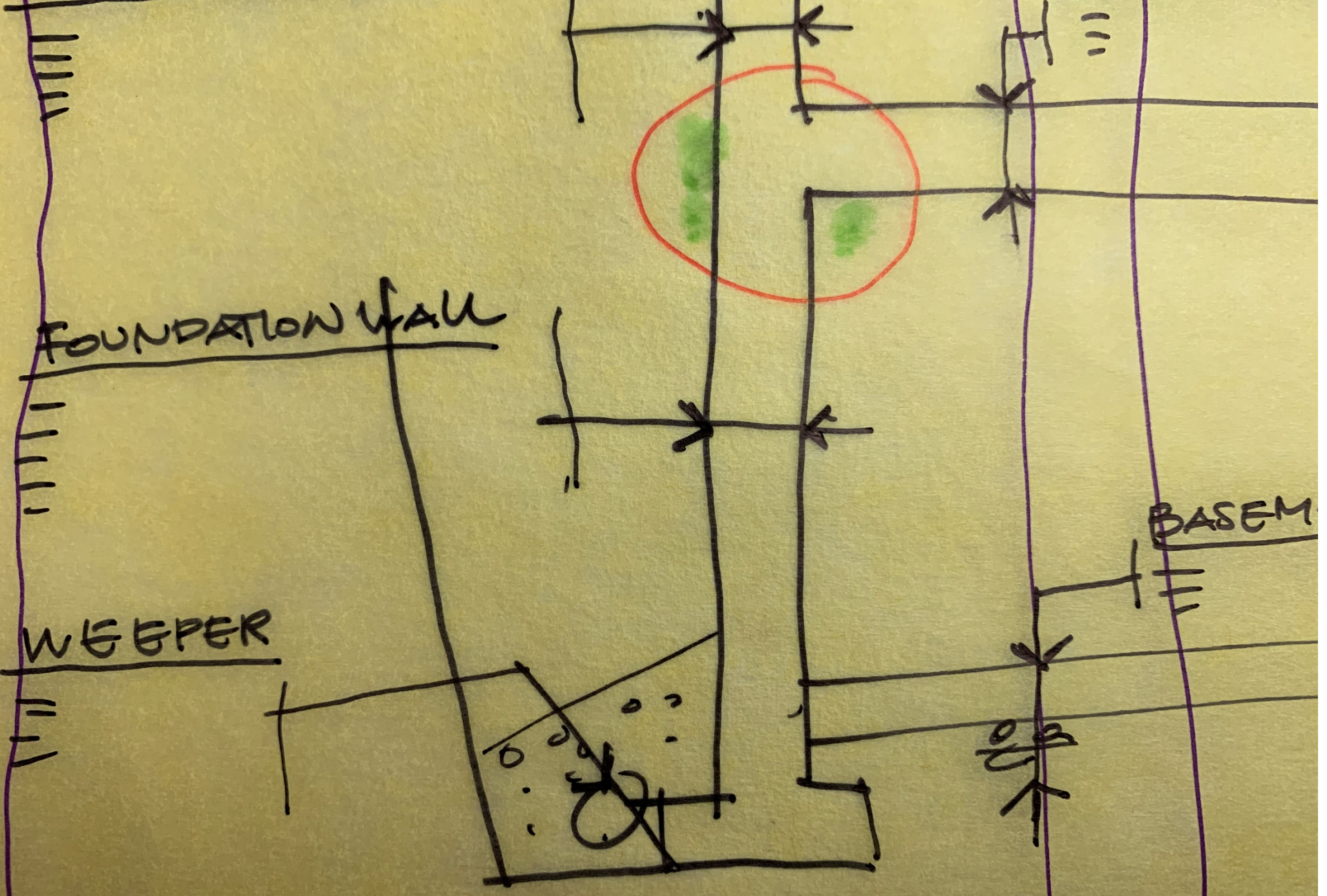
Label the entire drawing.
All of the info from the
handout should be
included in the
“assembly” type notes.

Areas in red/green get
more notes that point to
specific items.



BRICK WALL ASSEMBLY

FLOOR ASS



FOUNDATION WALL

WEEPER

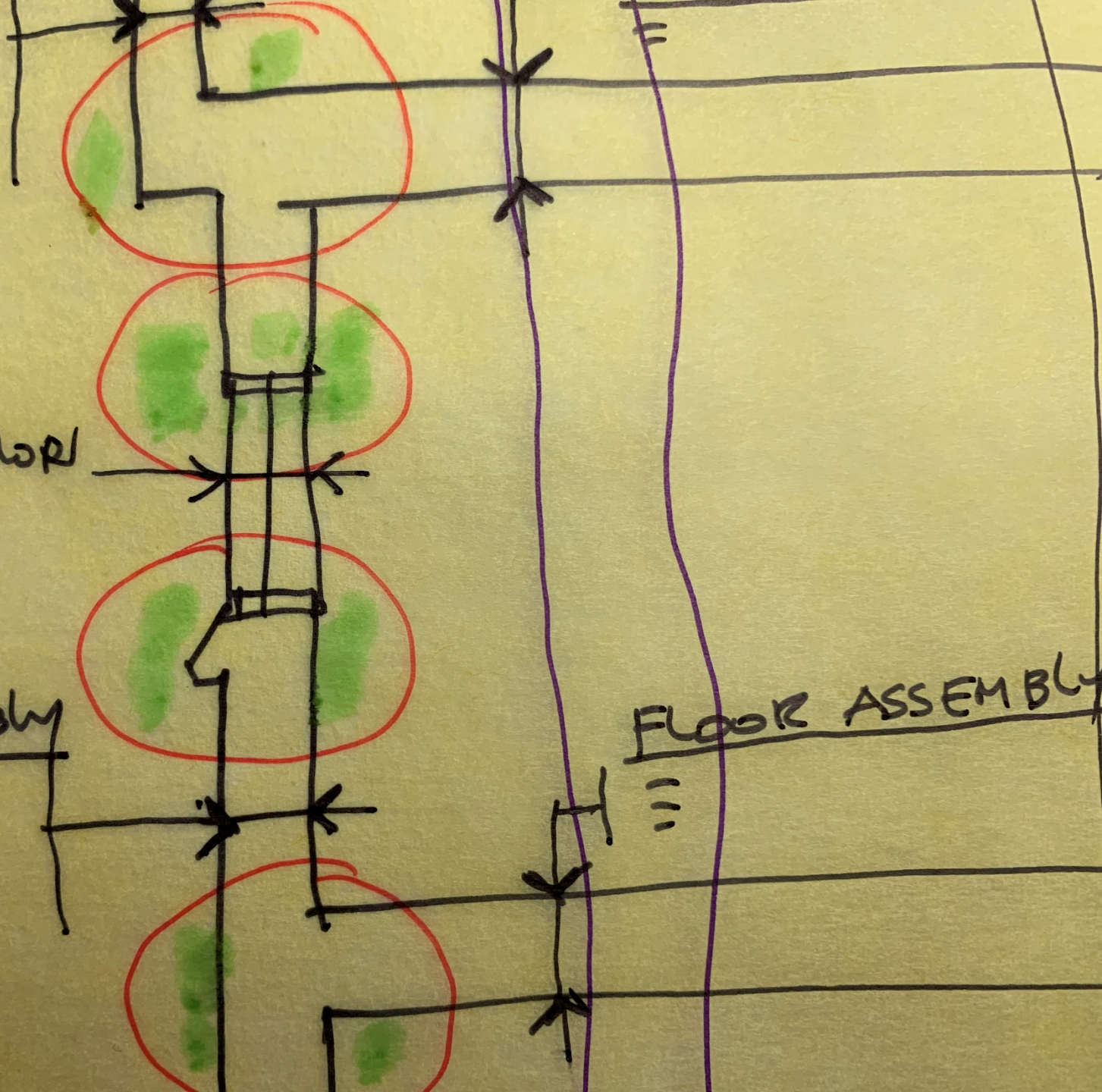
BASEM

D/S

W DESCRIPTION

WALL ASSEMBLY

FLOOR ASSEMBLY



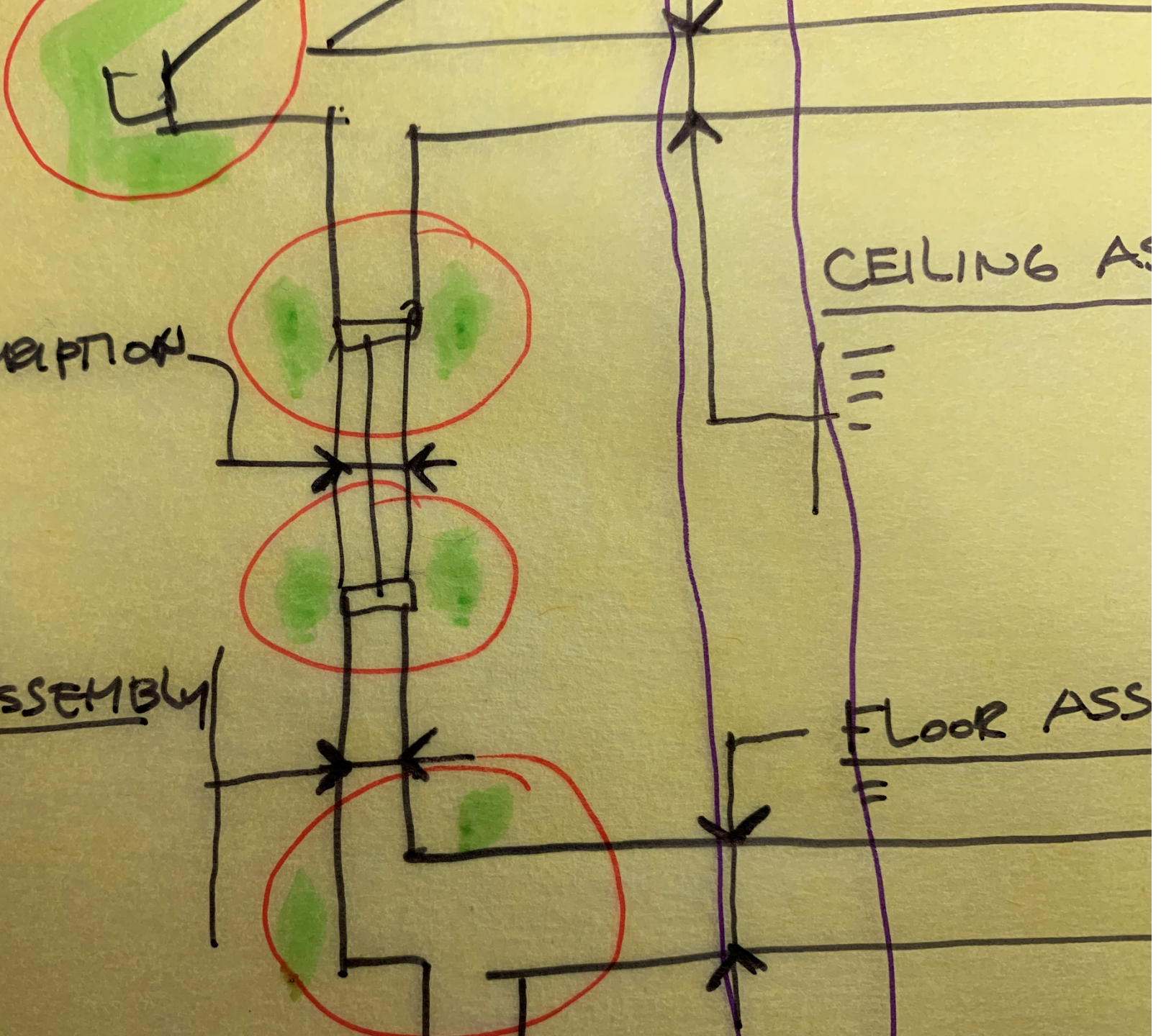
EXTRA
SEPARATE
NOTES

HOW DESCRIPTION

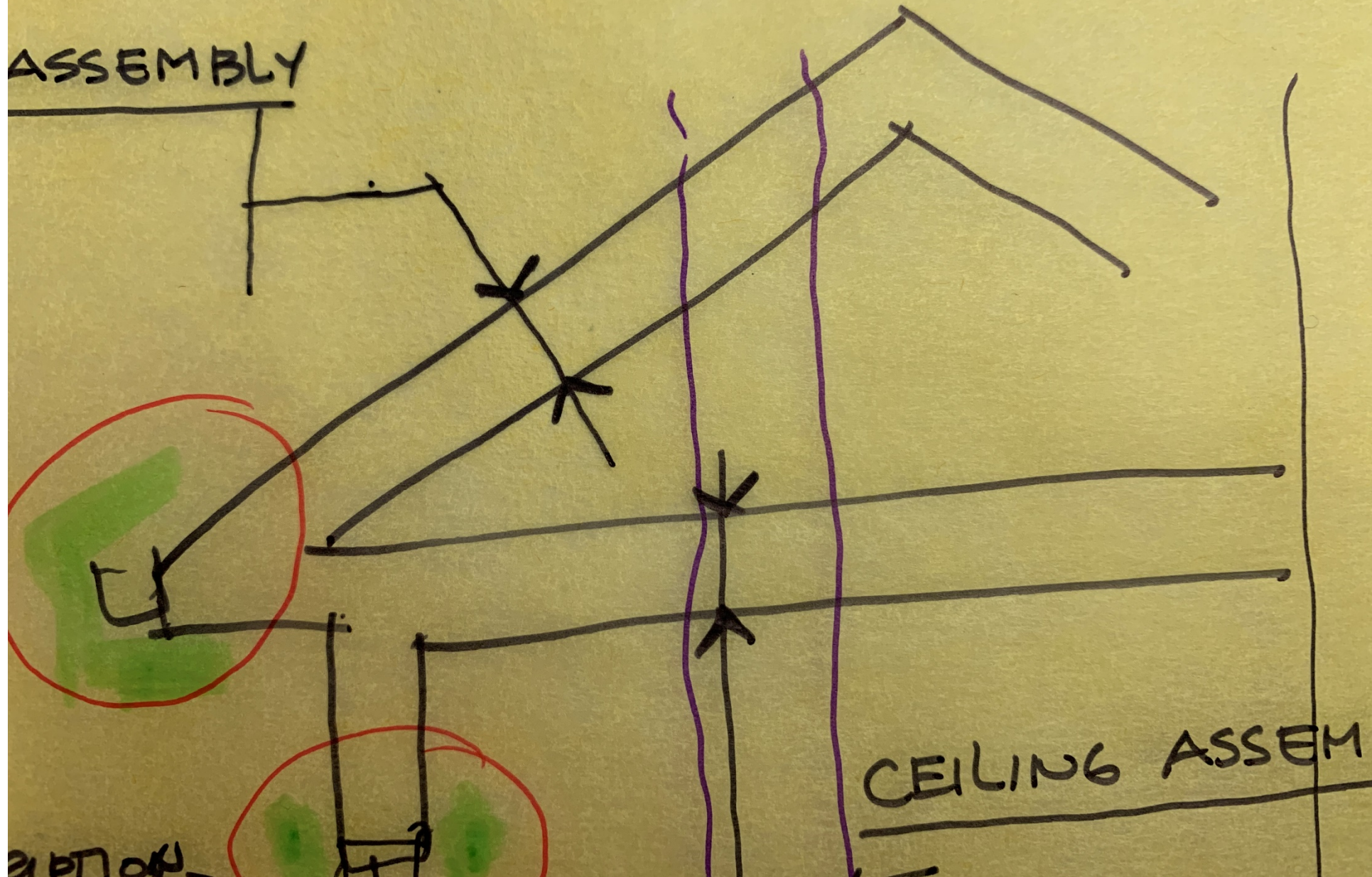
WALL ASSEMBLY

CEILING ASS

FLOOR ASS



ASSEMBLY




CEILING ASSEM


ASSEMBLY

line weight

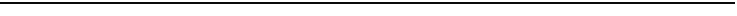
It is extremely important to use different line weights to make the drawing read clearly.




Heavy line when cutting through a material to define the outside.



Lighter lines to show elements in elevation, or further away.



Even lighter lines still for hatching or objects further in the distance.



Dashed lines to show objects above you.

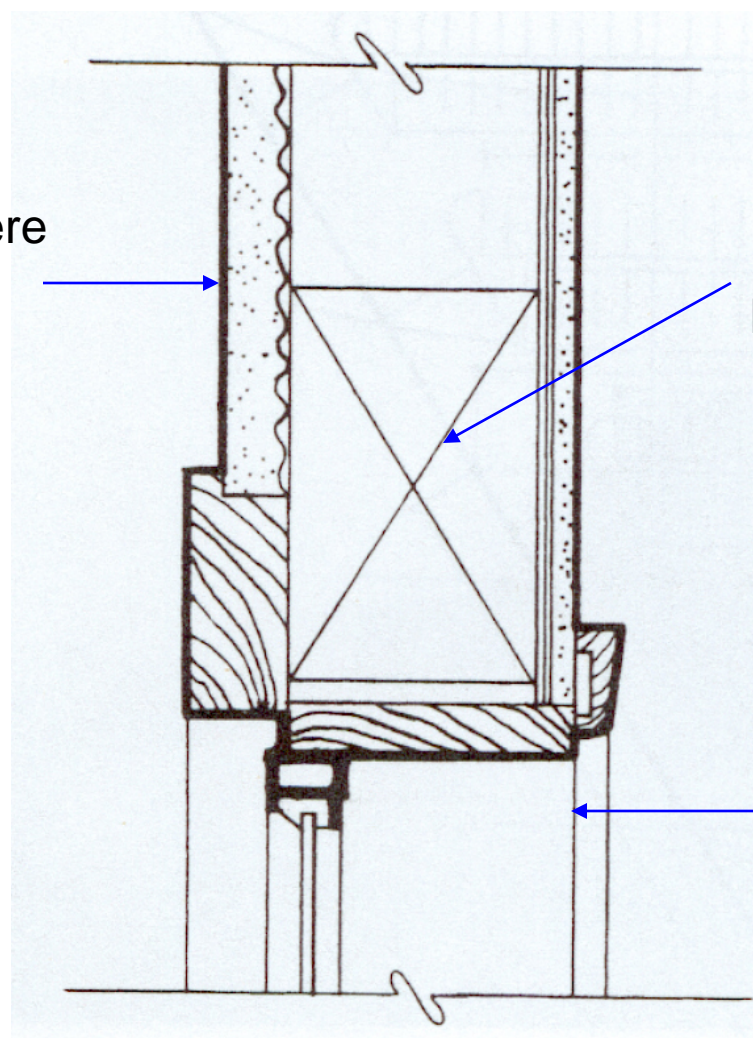


Dotted lines to show hidden lines.

Lines in general

line weight

Heavy outline where
cut in section



Lighter lines for
hatching

Lighter lines to show
materials "beyond"

hatching...

Materials are hatched in the plan or section view so that it is easier to tell what they are.

Hatching does NOT substitute for labeling.

As you can see from these diagrams, there are many different ways of hatching the same materials – so hatching is not a fail safe way to let the contractor know what material you want to use...

| | GRAPHICS STANDARD | NORTHERN CALIFORNIA CHAPTER A. I. A | BOOKS, PAMPHLETS, MFG. LITERATURE, ETC. |
|---------------------------------------|-------------------|-------------------------------------|---|
| ACOUSTIC TILE | | | |
| BRICK: COMMON | | | |
| FACE | | | |
| CERAMIC TILE | | | |
| CONCRETE: SMALL SCALE | | | |
| BLOCK | | | |
| CAST-IN-PLACE & PRECAST | | | |
| LIGHTWEIGHT | | | |
| EARTH | | | |
| GLASS | | | |
| INSULATION: BATT, LOOSE, FILL-BLANKET | | | |
| RIGID | | | |
| RESILIENT FLOORING TILE | | | |

Figure 2.49 Materials in section.

labeling

This is a “sketch section”.

This is what you might rough out before you do the final drawing to see if things work.

With a bit of experience you will be able to draw by hand “to scale” without measuring...

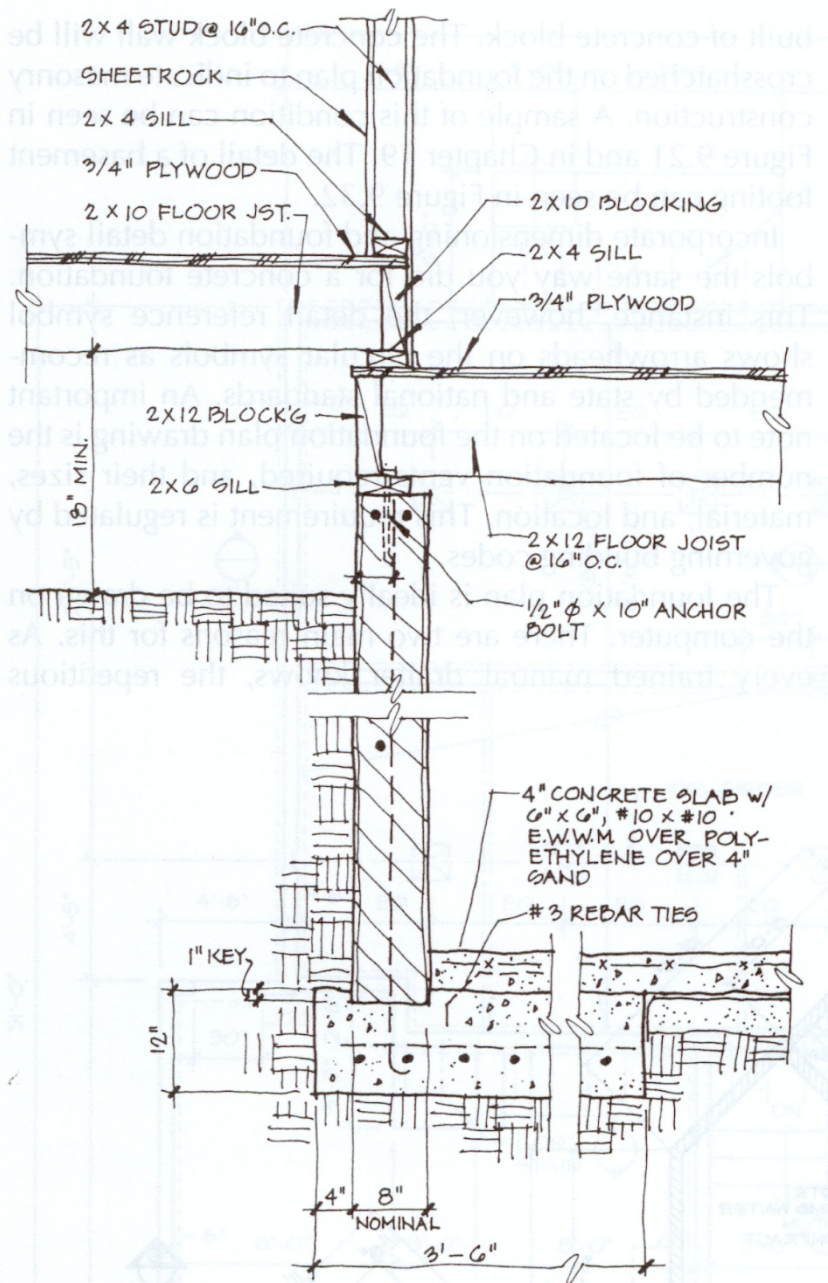


Figure 9.22 Concrete block wall and basement—wood floor.







